



32 Bourke Crescent Nudgee QLD

4  2  2 

Are you looking for a well-maintained family home located in a very popular pocket of Nudgee, ready to move into? Look no further 32 Bourke Crescent Nudgee ticks all the boxes and will suit the discerning buyer looking for a modern contemporary design .

This home has a spacious light-filled designer kitchen with loads of storage and bench space options. Featuring a gas cooktop and dishwasher the stainless appliances complete this stylish area to make entertaining your family and friends a dream.

The open plan living and dining area features timber flooring , airconditioning and plenty of natural light.

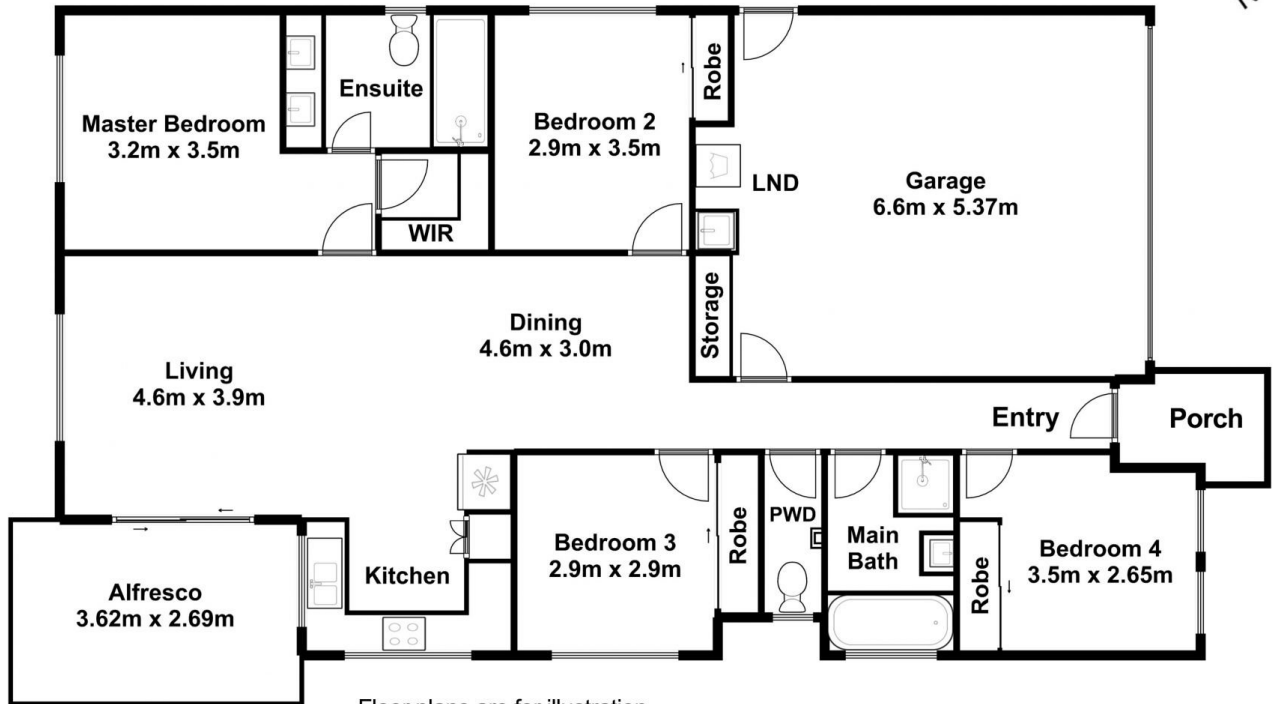
The back yard is level and fully fenced and beautifully green providing a perfect backdrop for your living room and

Price : \$ 860,000
Land Size : 420 sqm
View : <https://www.aumr.com.au/1P4406>



Kate Peereboom
0417 719 566

32 Bourke Crescent, Nudgee



Floor plans are for illustration purposes only. Measurements are in metres and are approximate.

Internal:- 157.81sqm
External:- 14.98sqm
Total:- 172.79sqm