



**8/25 Whytecliffe Street Albion QLD**

2  2  1 

With stunning city views that stretch to Mt Coot-tha this light, spacious apartment is located in the trendy hub of Albion and within walking distance to many amazing bars, cafe's and restaurants. With a fresh paint and new carpet throughout, this apartment is ready to welcome it's new tenants home.

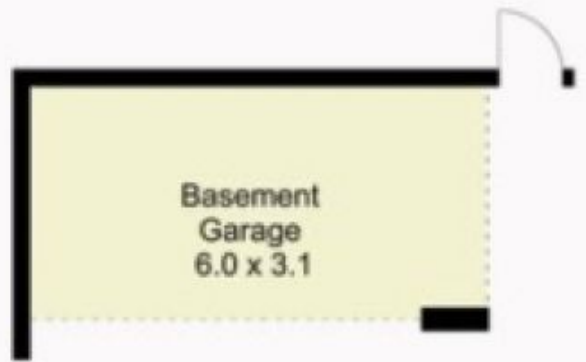
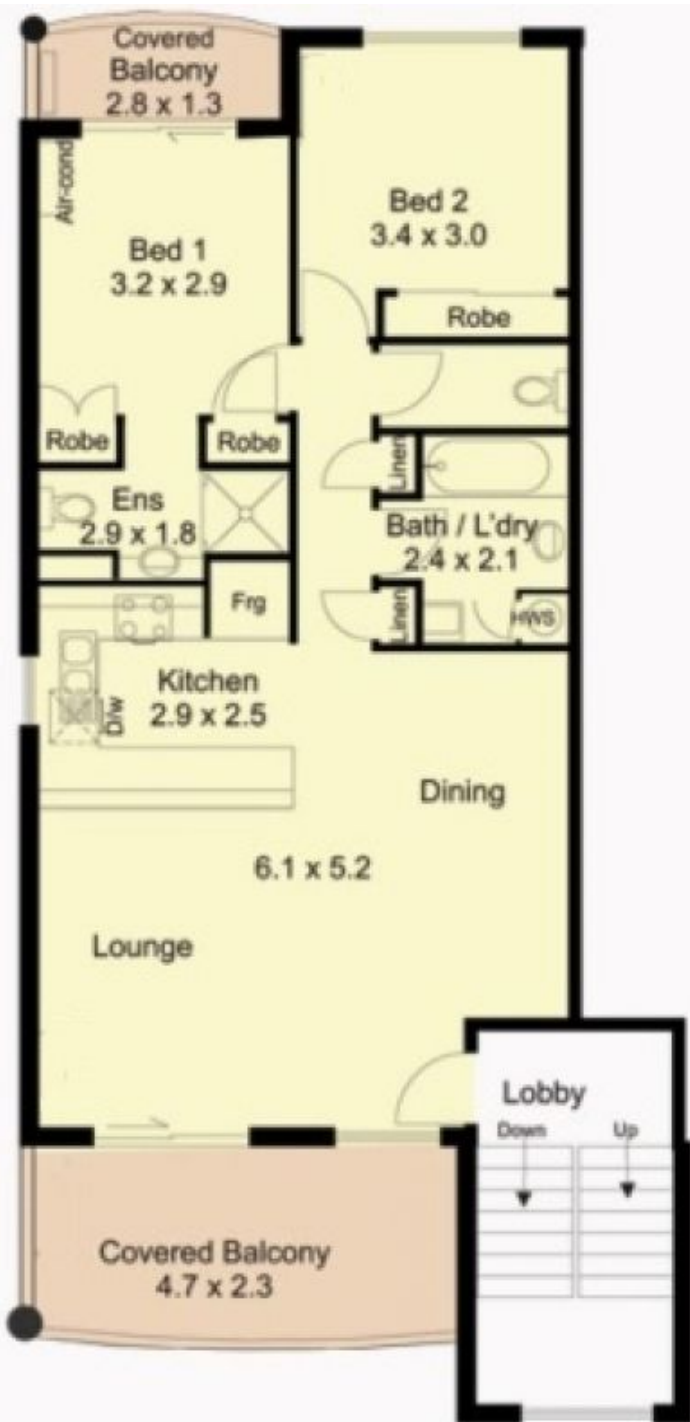
**View** : <https://www.aumr.com.au/1P2869>

Features include;

- + Two spacious bedrooms with built in wardrobes
- + Main bedroom with ensuite, air conditioning & balcony
- + Oversized open-plan living, dining & kitchen
- + Kitchen with dishwasher & plenty of storage
- + Main bathroom with bathtub & separate toilet
- + Internal laundry
- + Amazing view of the city skyline
- + Secure remote access garage, with space for one vehicle



**Tino Mkwanzani**  
**07 3154 5707**



**'Barwick Place'**  
25 - 27 Whytecliffe Street  
Albion

Areas	
Living	77 sq m
Balconies	15 sq m
Garage	20 sq m
<b>Total</b>	<b>112 sq m</b>



**Note**  
While every endeavor has been made to verify the correct detail in this brochure, neither the Agent nor Seller or contracted illustrator accept liability for any error or omission. Prospective Buyers should make their own enquiries and form their own judgement on this property.