



52 Wade Street Wavell Heights QLD

5  3  2 

Welcome to 52 Wade Street, a stunning contemporary located in the heart of Wavell Heights. This spacious 5 bedroom, 3 bathroom home offers multiple luxurious living spaces and is perfectly designed for a relaxed lifestyle.

Key Features:

. Spacious multiple living areas. The open plan light-filled living areas are perfect for entertaining and feature large windows and easy-care polished porcelain tiles.

. Designer kitchen featuring stainless steel appliances inc 900mm oven and 5 gas burner hotplates, Caesarstone bench tops, and custom two pac cabinetry with walk-in pantry.

. Master Suite: The luxurious suite includes a walk-in robe

Price : Contact Agent
Building Size : 296.5 sqm
Land Size : 446 sqm
View : <https://www.aumr.com.au/1P5382>



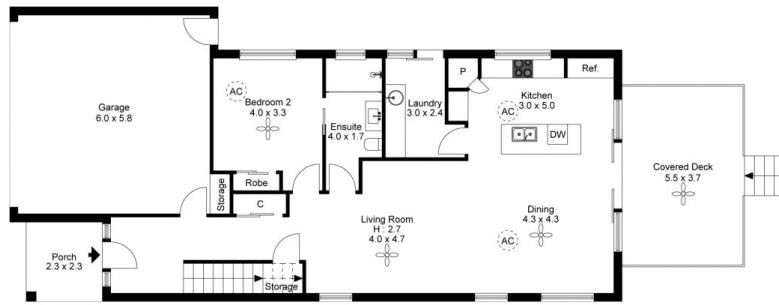
Kate Peereboom
0417 719 566



Site Plan



First Floor



Ground Floor



The floor plan is not to scale; measurements are indicative and in metres. Exterior elements are not in position. Plans should not be relied on. Interested parties should make and rely on their own enquiries.

Produced by **DIAKRIT**